

TB20E 2ton

Electric Pallet Truck

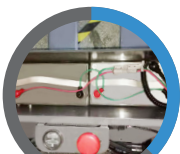
ZOOMLION

Smarter than smart



⚡ Flexible Power System

Standard



Gel battery

Plus



Lead acid battery

Li-ion



Li-ion battery



Three configurations can meet different working requirements and upgrading the battery system does not effect the units dimension in anyway.

⚡ Serviceability

- 1 5 years maintenance free Lithium-ion battery warranty.



- 2 CURTIS controller, reliable performance, easy maintenance, fault diagnosis can be carried out by hand-held programmer.

- 3 All connectors are IP65 water-proof. This allows for outdoor applications even when raining.



⚡ High Efficiency

- 1 100Ah Li-ion 2hrs fast charging.

- 2 7% full load gradeability due to powerful gearbox and drive wheel.

- 3 Ergonomic tiller arm with integrated hall acceleration switch, lifting switch, LCD meter, hour meter and other functional components.



- 4 750W drive wheel, with large reduction ratio gear box, guarantees high torque when you need it. Optimized drivetrain guarantees easy access and replacement of PU wheel. (No disassemble of drive train required.)



Machine Parameters

Drive			Electric
Operation			Pedestrian
Nominal load capacity	Q	kg	2000
Load center distance	C	mm	600
Load distance	X	mm	965
Wheel base	Y	mm	1315/1385
Empty weight incl. Battery (li-ion, Lead acid battery, Gel battery)		kg	280/360/300
Axle loading, laden (front/rear)	front/rear	kg	920/1380
Axle loading, unladen (front/rear)	front/rear	kg	240/60
Tyres			PU
Tyres size (front)	front		Ø220x80
Tyres size (rear)	rear		Ø80x60
Additional wheels			Ø85x48
Wheels, number (x = driven)			1x + 2/4
Tread (front/rear)	b10/b11	mm	478/395/525
Rated lift	h3	mm	120
Drawbar height in driving position (min/max)	h14	mm	800/1190
Forks height, lowered	h13	mm	85
Overall length	l1	mm	1660/1730
Length to face of forks	l2	mm	510
Overall width	b1	mm	690
Fork dimensions ISO 2331	s/e/l	mm	55/160/1150/1220
Distance between forks arms	b5	mm	550/685
Ground clearance wheel base center	m2	mm	30
Aisle width for pallets 1000x1200 crossways	Ast	mm	1860/1930
Aisle width for pallets 800x1200 lengthways	Ast	mm	1910/1980
Turning radius	Wa	mm	1475
Travel speed (laden/unladen)		km/h	4/4.5
Lifting speed (laden/unladen)		m/s	0,020/0,03
Lowering speed (laden/unladen)		m/s	0,035/0,025
Max. gradeability (laden/unladen)		%	7/15
Service brake			Electromagnetic
Drive motor, output with S3 = 60 min.		kW	0.75
Lifting motor rating at S3=15%		kW	0.8
Battery Voltage	U	V	24
Battery capacity K5 (li-ion, Lead acid battery, Gel battery)		Ah	100/130/100
Battery weight (li-ion, Lead acid battery, Gel battery)		kg	100/180/30x2
Type of drive unit			DC
Sound pressure Level LpAZ		dB(A)	70

Machine 2D Graph

